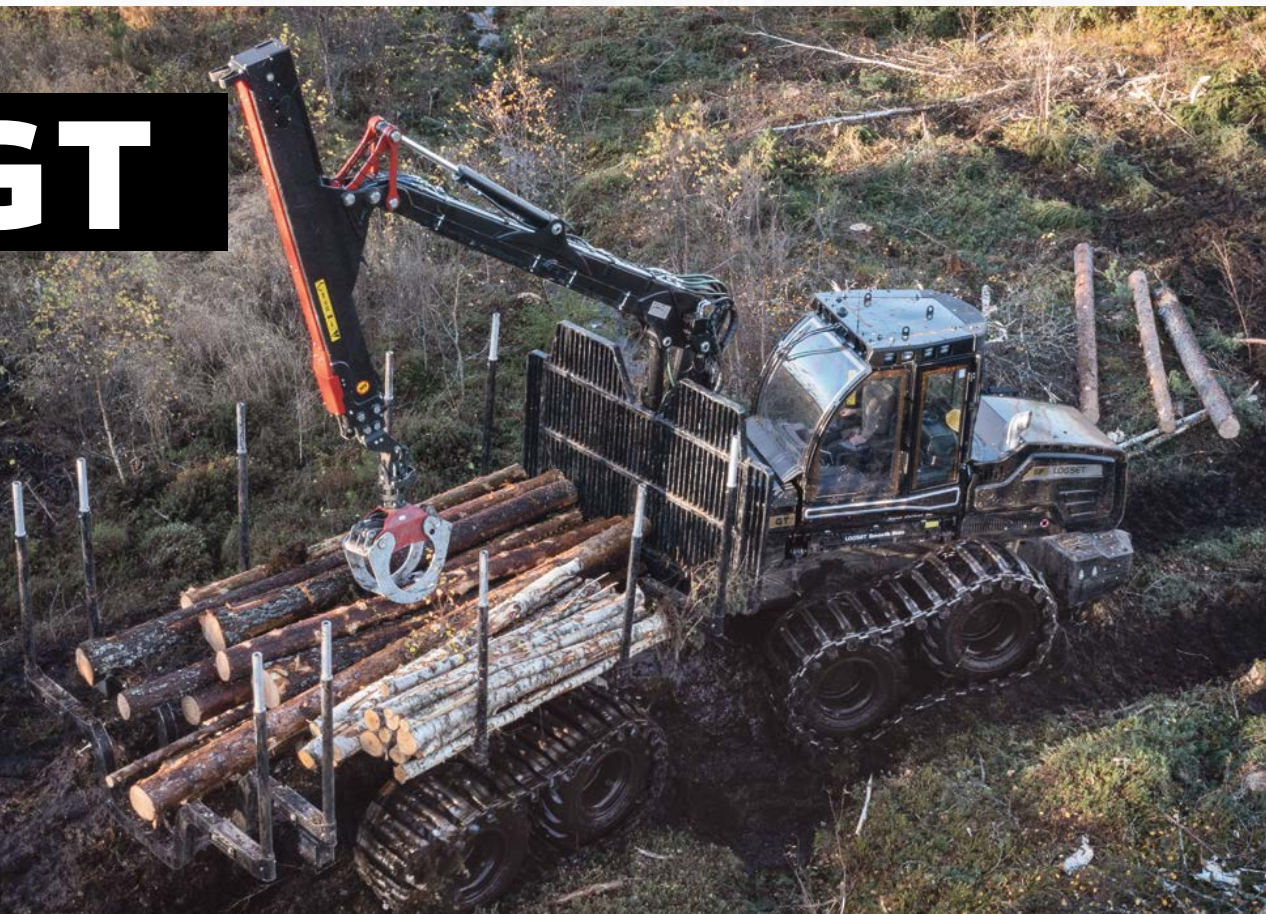


# 6F GT



LOAD CAPACITY **14<sup>t</sup>**

OWN WEIGHT **18<sup>t</sup>**

ENGINE POWER **230<sup>HP</sup> 169<sup>KW</sup>**

CRANE OPTIONS **7,9/10<sup>M</sup>**

TRACTIVE EFFORT **196<sup>KN</sup>**

## LOGSET 6F GT

### DIMENSIONS

Own weight, from	18 000 kg (39 700 lbs)
Load capacity	14 000 kg (30 800 lbs)
Load area	4,85 - 5,85 m <sup>2</sup>
Load area length	4 m (157", 13.1 ft) 5,2 m (205", 17.1 ft)

### ENGINE

Type	AGCO Power 74 LFTN
Stage	EPA Tier 4 final, EU Stage V
Power at 1850 rpm	169 kW (230 hp)
Torque at 1500 rpm	1000 Nm (740 ft lb)
Fuel tank	188 l (49 US gal)
DEF	30 l (8 US gal)

### TRANSMISSION

Type	Hydrostatic mechanical
Tractive effort	196 kN (44 000 lbf)
Gear box	2 gears

### HYDRAULIC SYSTEM

Pump size	140 cm <sup>3</sup>
Pressure	24 Mpa
Hydraulic oil tank	175 l (46 US gal)

### CABIN

Control system	TOC 2
Battery voltage	24 V
Options:	Smooth Ride, Smooth HIFI.
Safety tested and approved cabin	

### TYRES

Standard	710/45-26.5
Optional	600/55-26.5 800/40-26.5

### CRANE

Mesera crane options	Mesera 92 F
Reach options	7,9/10 m (25.9/32.8 ft)
Lifting capacity	130 kNm (95 800 ft-lb)
Rotator	360°

### OPTIONAL EQUIPMENTS

Contact your local dealer for more information.

**LOGSET**

[www.logset.com](http://www.logset.com)